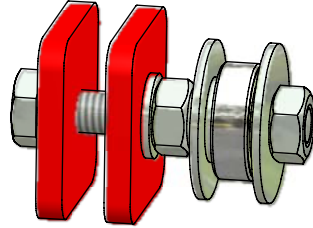
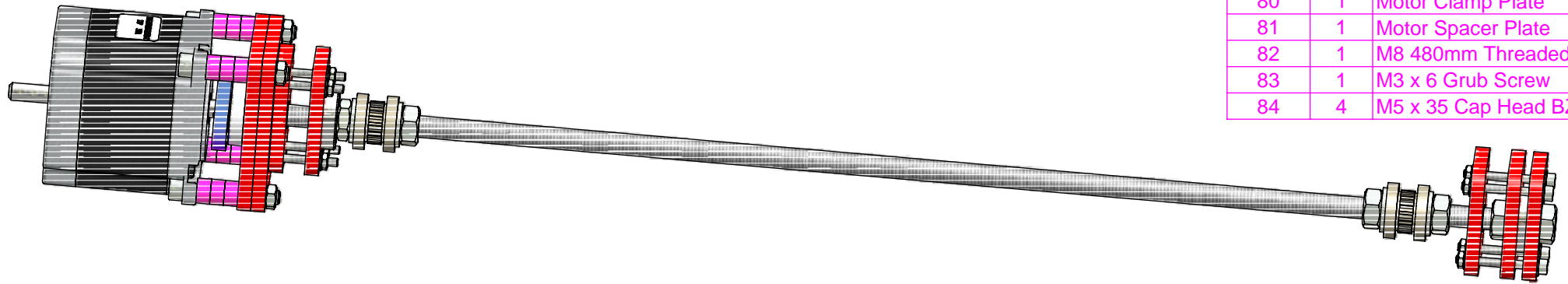



Y Idler 2 off		
ITEM	QTY	PART NUMBER
14	1	608ZZ Bearing
20	1	M8 Nut Full BZP
23	4	M8 Washer BZP
74	1	M8 x 50 Hexagon Set BZP
85	2	Idler Mount
86	1	M8 Nut Nyloc
87	2	M8 x 30 Washer BZP



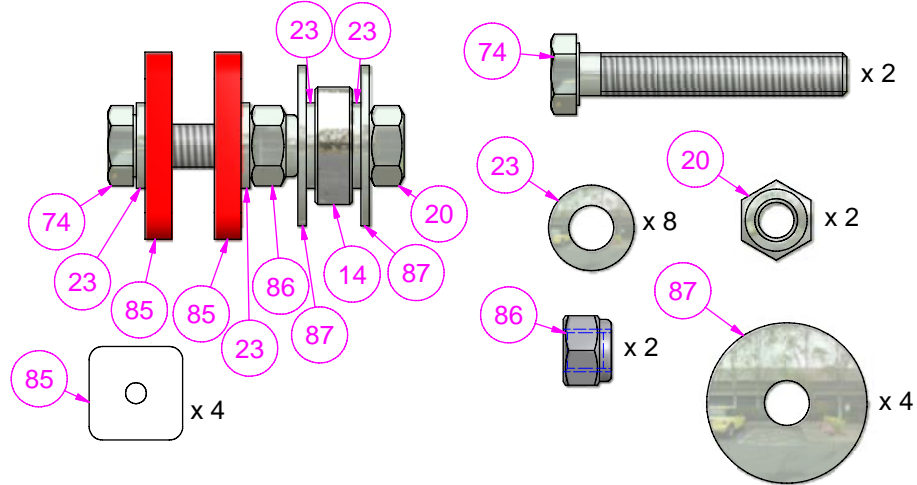
Y Drive Assembly		
ITEM	QTY	PART NUMBER
6	10	M3 Nut Full BZP.ipt
7	17	M3 Washer BZP
8	4	M5 Nut Full BZP
14	2	608ZZ Bearing
20	7	M8 Nut Full BZP
23	7	M8 Washer BZP
46	2	20T Pulley
47	4	20T Flange
50	1	1-4 Motor Plate
51	1	M8 Driven
52	12	Motor Spacer
53	1	FL57STH56-3008B
55	8	M3 x 30 Cap Head BZP
57	1	M3 x 6 Cap Head BZP
75	1	M8 Nut Half BZP
78	3	Bearing Plate
79	2	Bearing Clamp Plate
80	1	Motor Clamp Plate
81	1	Motor Spacer Plate
82	1	M8 480mm Threaded
83	1	M3 x 6 Grub Screw
84	4	M5 x 35 Cap Head BZP



Designed by Ian Adkins	Checked by	Approved by - date	Date 19/08/2008
		Y Assembly	
		Edition	Sheet 1 / 3

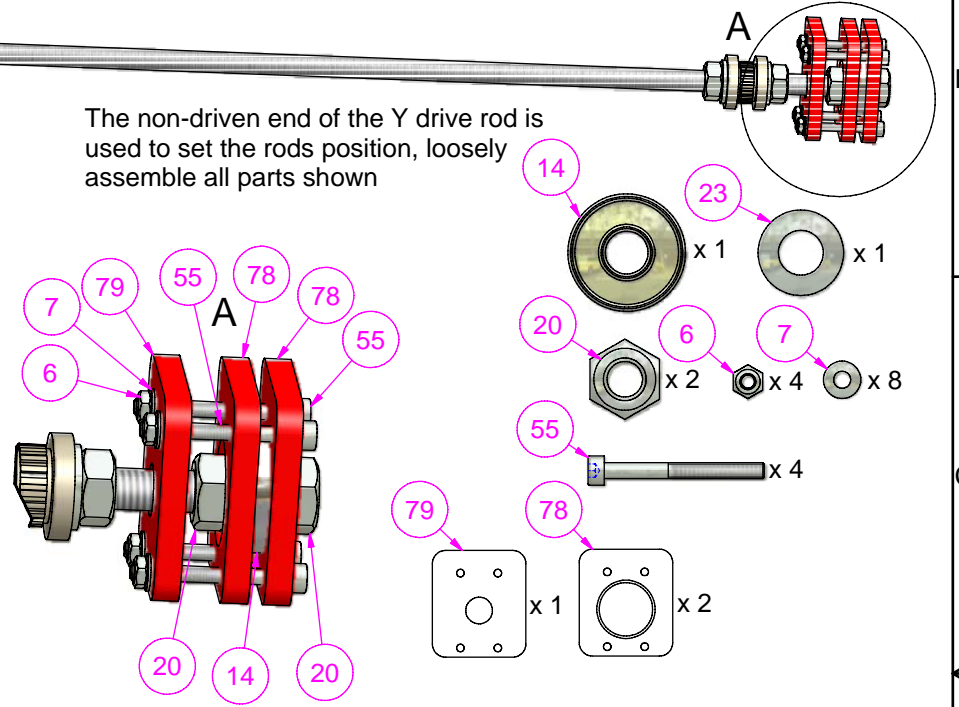
Step 1

Loosely assemble the Y idler bracket, this will be tightened when fitted to the main frame later.



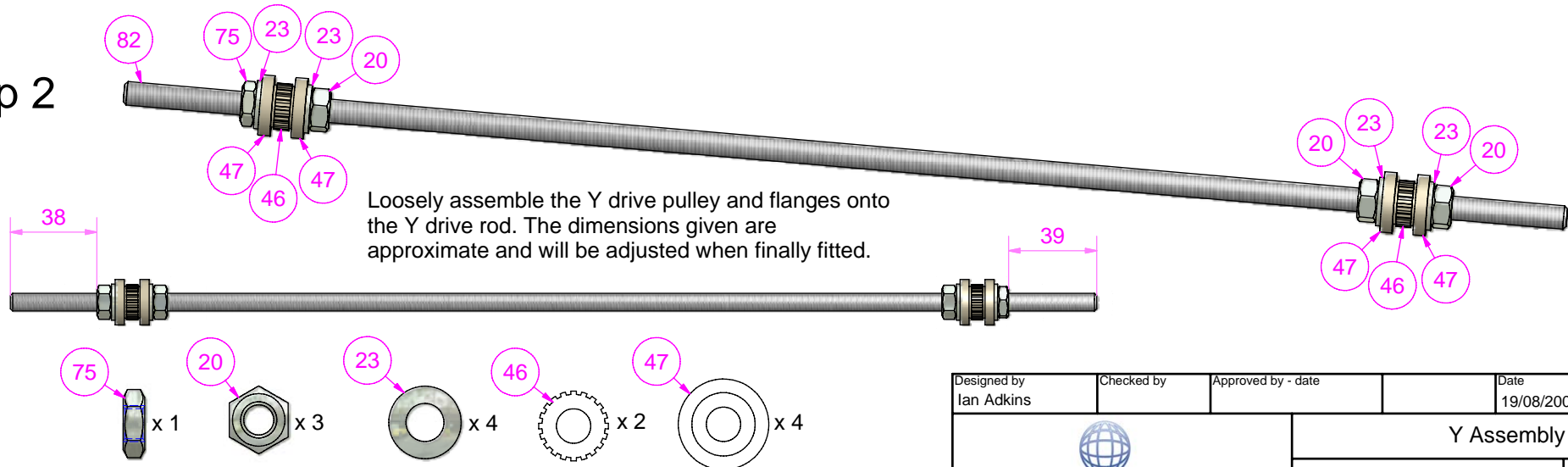
Step 3


The non-driven end of the Y drive rod is used to set the rods position, loosely assemble all parts shown



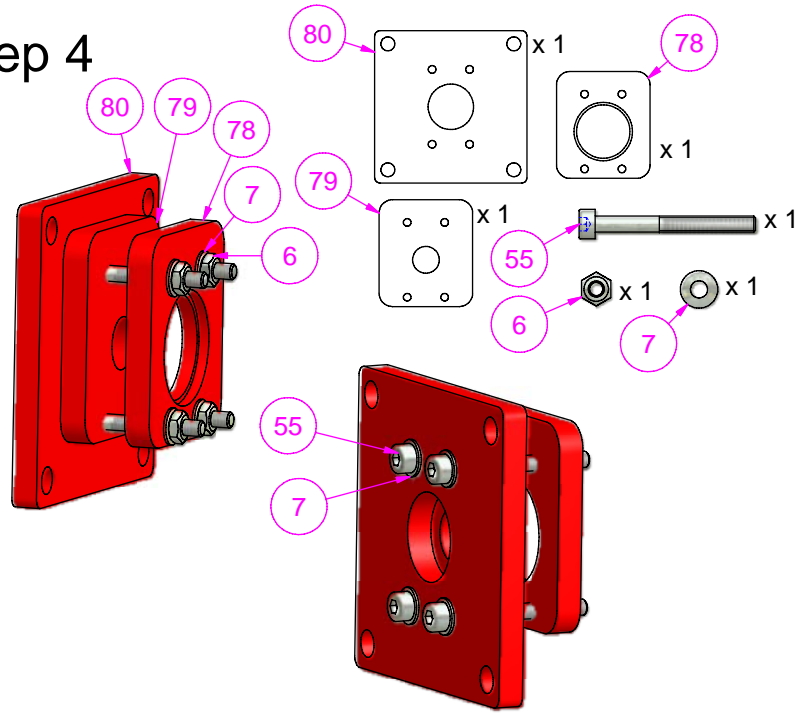
Step 2


Loosely assemble the Y drive pulley and flanges onto the Y drive rod. The dimensions given are approximate and will be adjusted when finally fitted.



Designed by Ian Adkins	Checked by	Approved by - date	Date 19/08/2008	
			Y Assembly	
			Edition	Sheet 2 / 3

Step 4



Designed by Ian Adkins	Checked by	Approved by - date	Date 19/08/2008	
		Y Assembly		
		Edition	Sheet 3 / 3	